





Using the Wireless access point at the Regional Public Safety Training Center

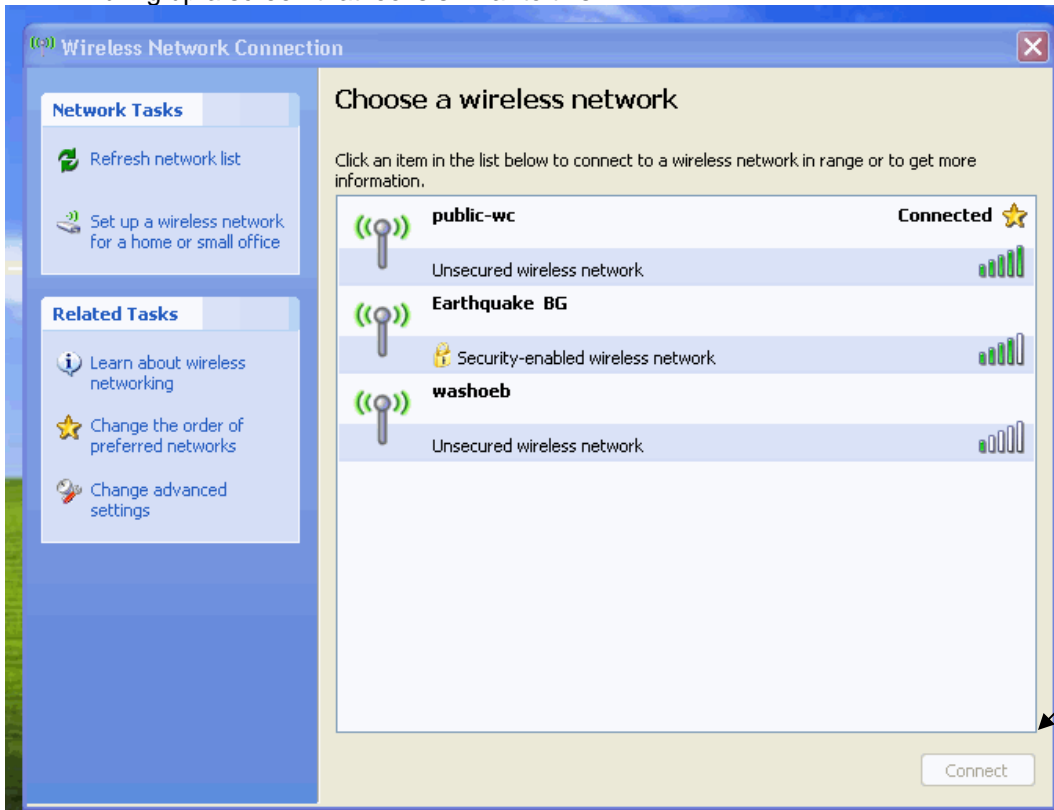
Required: You must have a wireless card in the device with which you are connecting. The wireless “radio” must be turned on. The instructions presented below are for devices using the Windows XP operating system and the default Windows Wireless Network client. Instructions are specific to Internet Explorer. If you use another Browser (such as Netscape or Firefox OR if your wireless card is managed by a different type of client software, please contact RPSTC staff.

1. If the above two conditions are met, i.e. you have a wireless enabled device and the radio on that device is turned on, when you enter the “hot zone” for the RPSTC wireless access point, you will see a balloon pop up in the bottom right hand corner of your computer screen. This area of your desktop display is called the System Tray and includes the clock and icons for programs which run continuously such as the volume control. You should see a message which will say something to the effect of “Wireless Network has been detected”. The message maybe worded slightly different depending the operating system you use. You should see one of the following symbols in your “system tray”

Icon	Wireless connection state
	Connected
	Connecting
	Not connected
	Warning

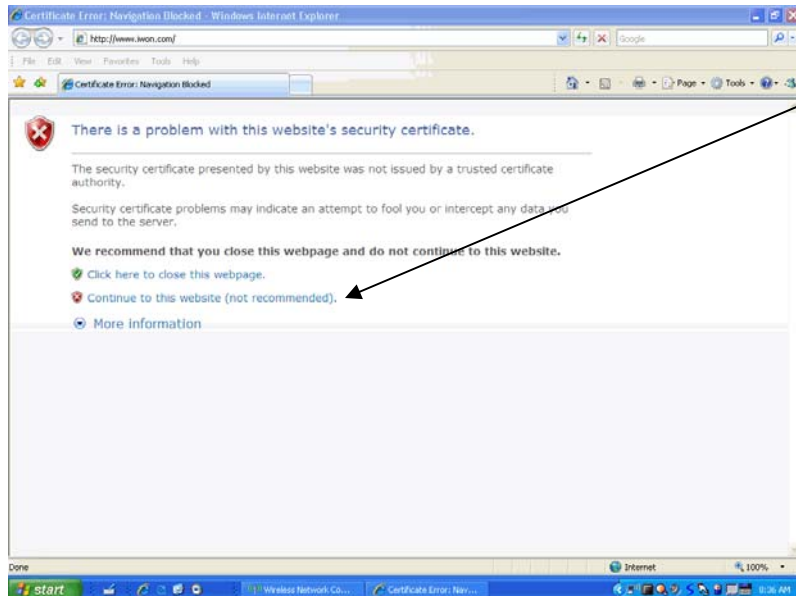
If you do not see one of the icons above, you likely do not have a wireless enabled device and will not be able to connect to the RPSTC wireless access point.

2. Click on the icon that looks like the first icon shown in the above picture. This should bring up a screen that looks similar to this:

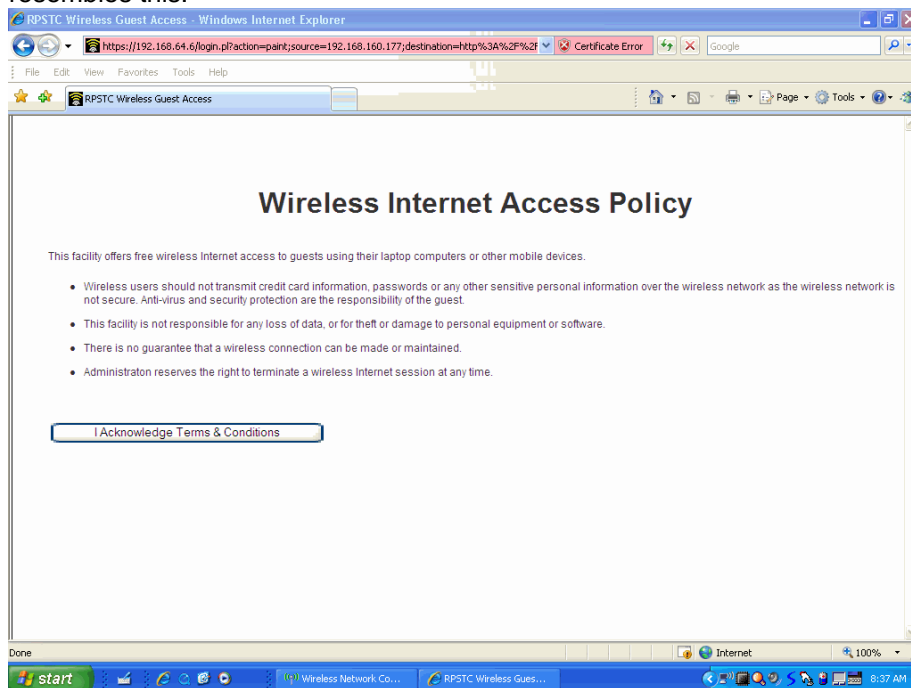


You may also see the wireless networks "Tsunami" and "Earthquake A" or "Earthquake BG". You cannot connect to these access points. As you can see, this shows the computer connected to the RPSTC wireless access point named "public-wc". If the computer was not connected, it would show a status of "Not Connected" or "Manual". If the status shows Manual or Not Connected, single click on the "public-wc" network then click the "Connect" button at the bottom.

Once the “public-wc” wireless network shows “Connected”; launch Internet Explorer or other browser software. You will be taken to a page that looks something like this:



Select “Continue to this website (not recommended)”. You will then be taken to a page that resembles this:



Select “I Acknowledge Terms & Conditions”. You will then be taken to the internet. You may initially see either the Washoe County home page (<http://www.washoecounty.us>) or the Regional Public Safety Training Center home page (<http://www.rpstc-reno.com>).

You will also see a box, usually in the bottom right hand corner of your screen that looks something like this:



This network is used for general access to resources such as the Internet. If you are a Washoe County employee, and wish to access your OWA, please contact the Help Desk at 775-328-3950.